

Forged Chain



458
滑架



160
滑架



348
滑架



678
滑架



458
链条



160
链条

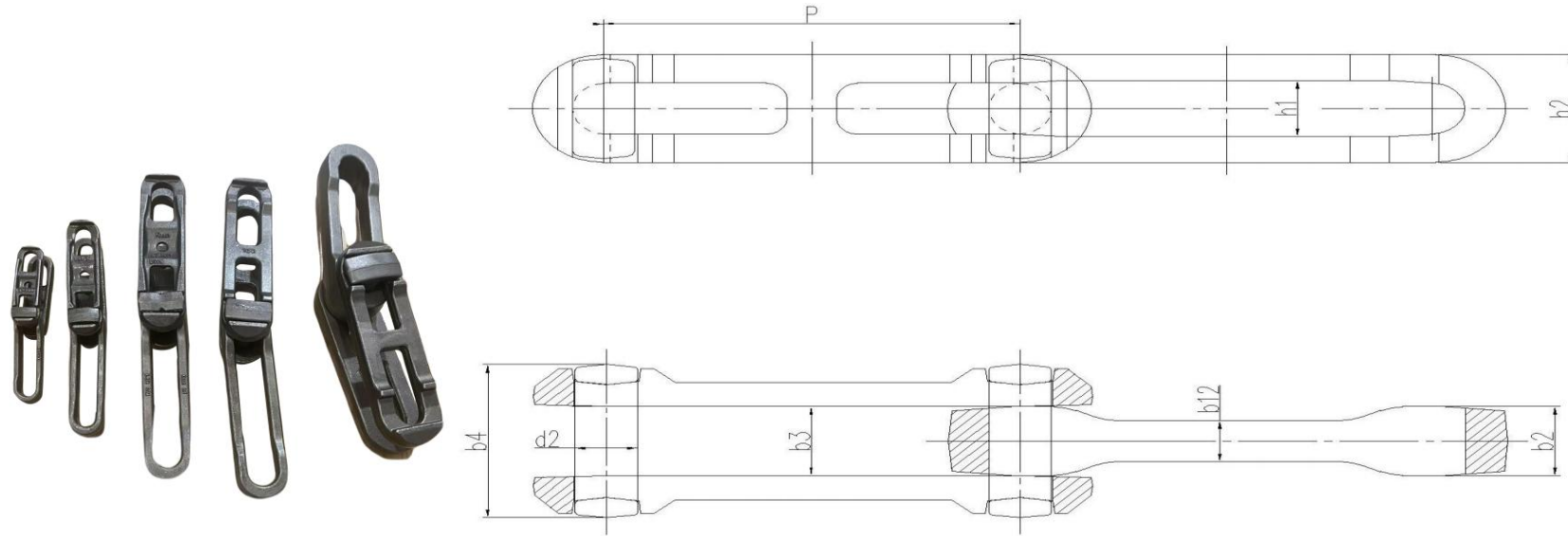


348
链条



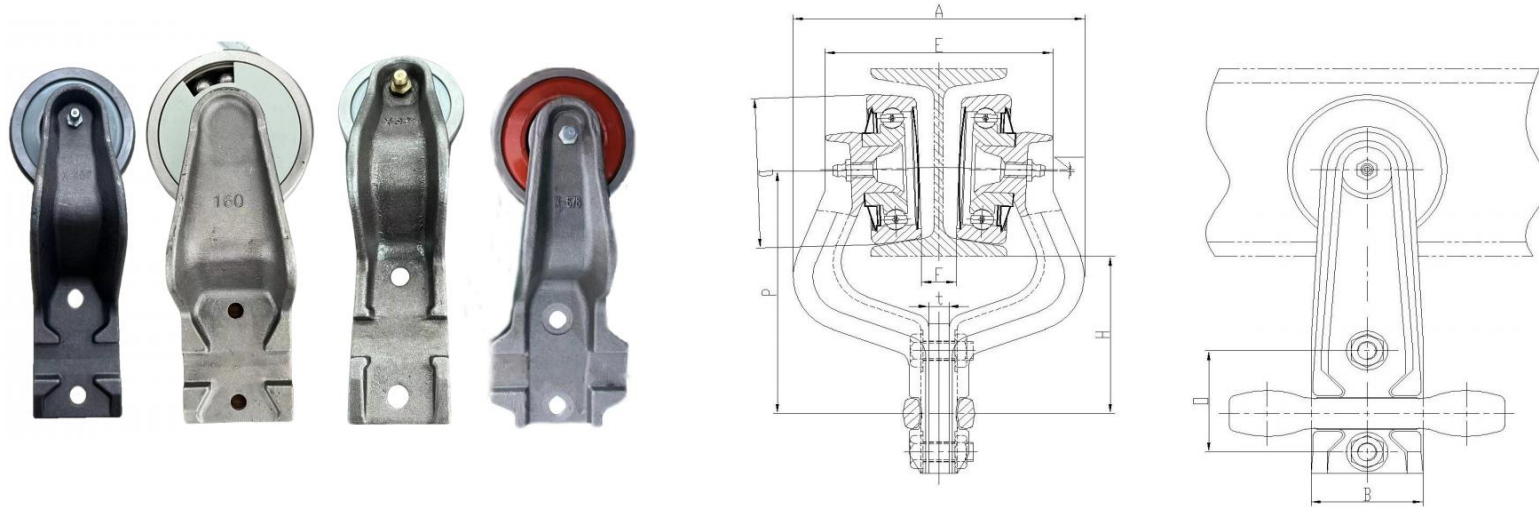
678
链条

Forged Chain Spec



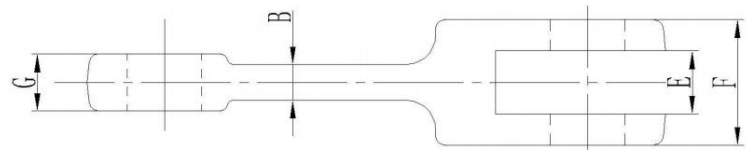
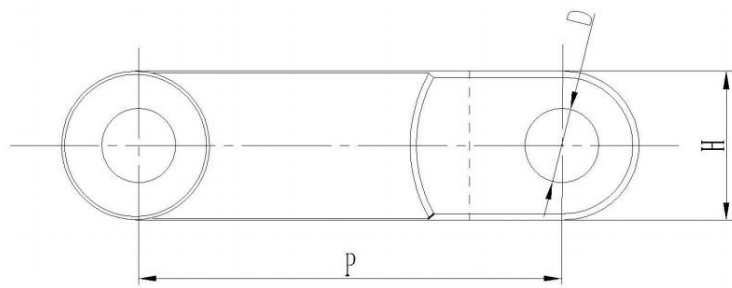
型号 Chain No	节距 P	内片开 口宽度 h1	销 轴 直 径 d2	链条 高度 h2	销轴 宽度 b4	内片头 部宽度 b2	内片腰 部宽度 b12	内档 b3 min	抗拉载 荷标准 KN	抗拉载 荷森耐 KN
X-348	76.6	13.5	12.7	28	47	18.8	13.2	20	98	150
X-458	102.4	18	16	36	57	25.4	16	26.2	187	270
X-678	153.2	25	22	51	77	32	21	34.5	320	450
F-160	160	28	24	54	80	34.5	20.5	40	400	520
F-80	80	13.5	12.7	29	46	18.8	13.2	20	110	150
F-100	100	18	16	36	57	25.4	16	26.2	220	270
H-698	153.2	32	28.5	68.3	95	38	25.4	41.5	600	650
468	102.4	25	16	49	84	40.9	29	43.2	300	410
998	229.4	30	28.5	68.3	96	40.5	29	43.2	600	720

Trolley Spec



型号 Chain No	P	H	A	F	B	D	O	t	E	单点吊 重KG
X-348/80	100	64	102	16.5	40	60	48	6	82	100
X-458/100	128.5	83	138	18	56	82	54	10	112	300
X-458-2	130	81	136	18	56	82	54	10	113	300
X-678	136	85	132	18	86	82	54	10	114	350
F-160	171	103	176	26	84	120	70	16	140	550

Scraper Chain Spec



型号 Chain No	P	H	F	E	G	B	D
MS100	100	36	32	15	13	8	14
MS101.6	101.6	36	32	15	13	8	14
MS125	125	46	50	26	24	15	20
MS142	142	50	42	21	19	12	25
MS142-2	142	50	56	26	25	17	24
MS142-3	142	50	62	30	29	15	25
MS150	150	34	32	17	15	8	16
MS160	160	50	42	21	19	12	25
MS200	200	54	54	28	26	14	26
MS200-2	200	70	70	32	30	25	32
MS228.6	228.6	90	125	51	48	32	32

Forging parts



Forging parts



Forging parts



Forging parts



Stamping and welding parts

